

# MONTHLY MEMBERSHIP PROGRESS REPORT

LOCATION MICHIGAN

District 11 A2

Results as of: 6/30/2022

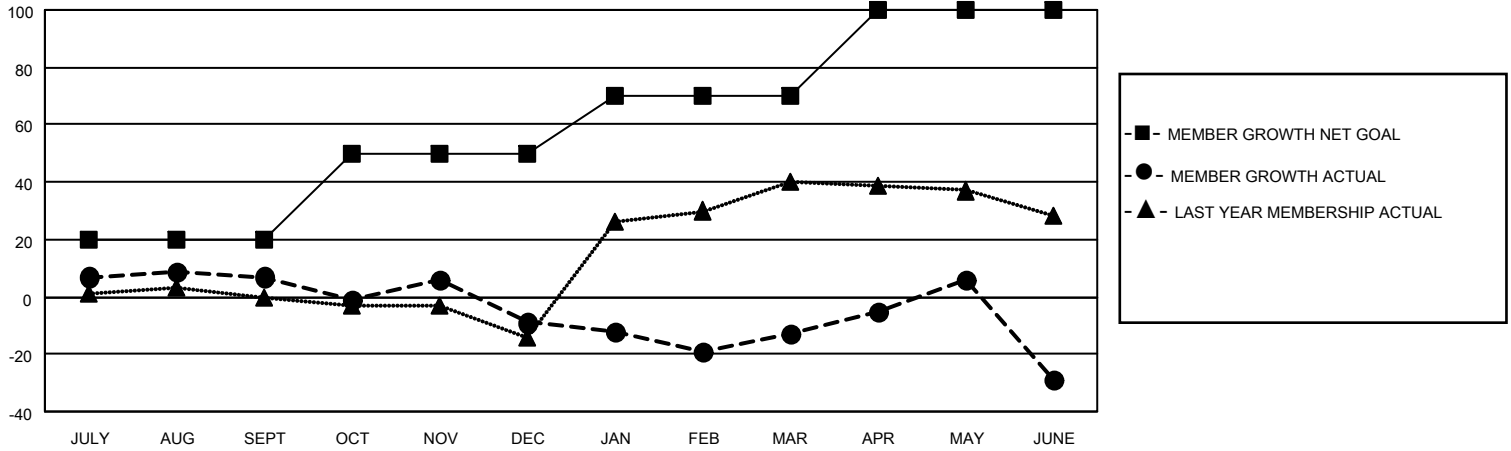
Clubs			
RESULTS FOR 2021-2022			
QUARTER	NEW CLUB GOAL	NEW CLUBS	DROPPED CLUBS
JULY/AUG/SEPT	0	0	0
OCT/NOV/DEC	0	0	0
JAN/FEB/MAR	0	0	0
APR/MAY/JUNE	0	0	1

Members			
RESULTS FOR 2021-2022			
QUARTER	MEMBER GROWTH NET GOAL	MEMBER GROWTH ACTUAL	DROPPED MEMBERS ACTUAL (including transfers)
JULY/AUG/SEPT	20	37	24
OCT/NOV/DEC	30	29	44
JAN/FEB/MAR	20	40	38
APR/MAY/JUNE	30	52	66

**GOALS AND ACTUAL NEW CLUBS CUMULATIVE**



**GOALS AND ACTUAL MEMBERS CUMULATIVE**



**DROPPED CLUBS: 1**

**22 CLUBS OF 38 ADDED 1 OR MORE NEW MEMBERS**

**GENDER DISTRIBUTION**

MALE	863 (65.18%)
FEMALE	461 (34.82%)
NON BINARY	0 (0.00%)
PREFER NOT TO ANSWER	0 (0.00%)

**DROPPED MEMBERS**

[CLICK HERE FOR CUMULATIVE MEMBERSHIP DATA](#)

DECEASED	32
CLUB CANCELLED	18
OTHER	122
<b>TOTAL</b>	<b>172</b>

TOTAL FAMILY UNIT MEMBERS	232
FAMILY MEMBERS PAYING HALF DUES	119